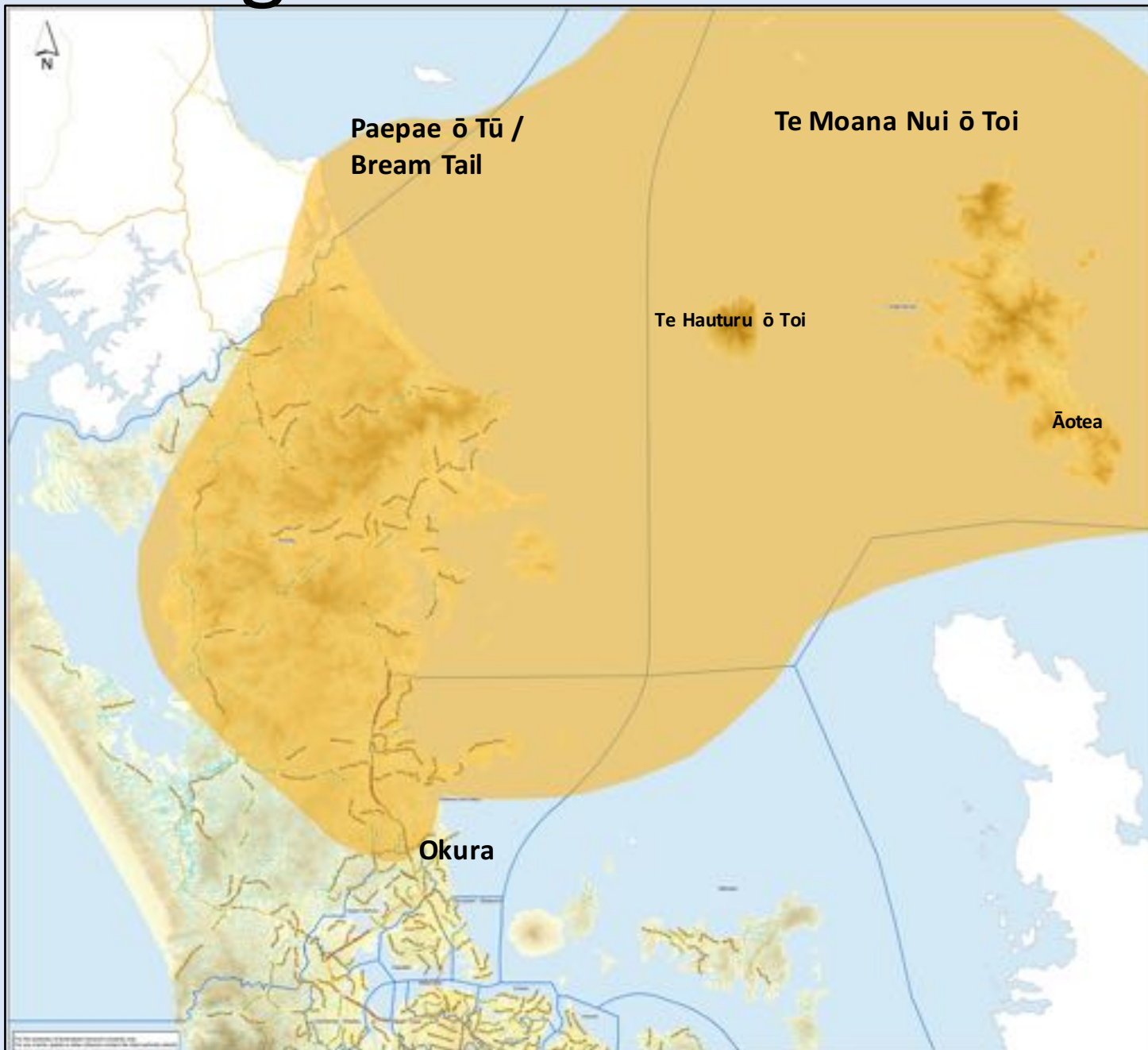


Manuhiri Kaitiaki Charitable Trust

Resource Management Unit



Ngāti Manuhiri Rohe



Rohe Features

- Te Moana Nui ō Toi Seaway, Coastline and Islands
- Ngā Maunga (Mountains)
 - Tamahunga (Spiritual head of Ngāti Manuhiri)
 - Tohitohi ō Reipae (The Dome)
- Ngā Roto (Freshwater Dune Lakes)
- Ngā Awa (Rivers)
 - Over 9 major rivers
- Ngā Whanga (Harbours)
 - Four harbours - regarded as some of the highest quality estuaries in Auckland
- Six Regional Parks
- Three Marine Reserves

Overview

- Ancestral connection with this rohe dates back to at least the 14th century
- Although there were permanently occupied pā and kāinga, the people moved throughout the rohe, including the islands, in a cycle of seasonal harvesting - marine, freshwater and forest
- Coastal iwi, heavily reliant on kaimoana

Ngāti Manuhiri Claims Settlement Act (2012)

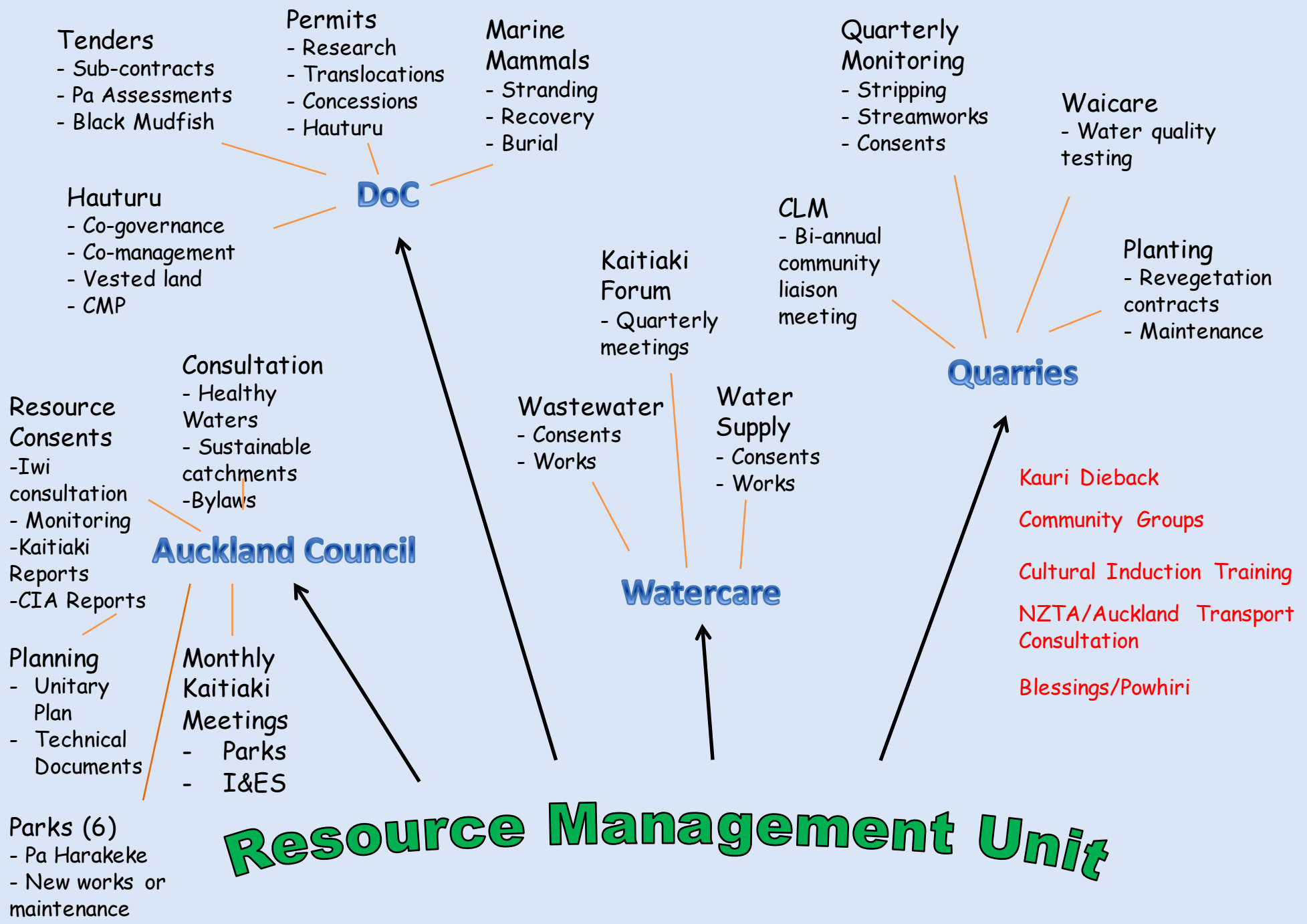
- Through the Treaty of Waitangi settlement process
- Mandates Ngāti Manuhiri as Mana Whenua
- Acknowledges and apologies for breaches of Treaty
- Provides statutory acknowledgement of statements by Ngāti Manuhiri regarding cultural, spiritual, historical and traditional associations

Kaitiakitanga Today

- The role and responsibilities of kaitiaki in contemporary cultural and natural resource management includes but is not limited to:
 - Protection and maintenance of wāhi tapu and other heritage sites
 - Protection of taonga
 - Placing of rahui to allow harvested resources to recover
 - Restoration of damaged ecosystems

Kaitiakitanga Today

- Protection of sensitive environments
- Directing development in ways which are in keeping with the environment
- Ensuring the sustainable use of resources
- Observing the tikanga associated with traditional activities
- Providing for the needs of present and future generations



Ki uta ki tai

- Regularly monitor and undertake Waicare testing at 3 quarry sites with streams
- Advise/input into cockle ban, Whangateau
 - Intention for rahui
- Support researchers
 - Hōteio Sedimentation Reduction Project
 - Mussels in Kawau Bay
 - Climate change/sedimentation tipping point experiments in Whangateau

Ki uta ki tai

- Undertaken small riparian planting contracts
- Strongly advocate for riparian planting when engaging with individuals, developers, central and local government agencies
- Water quality improvement project Ngāroto. Pilot 2016, full project 2017-2020
- Support re-introductions of native freshwater species i.e. Giant Kōkopu

Haere Ra